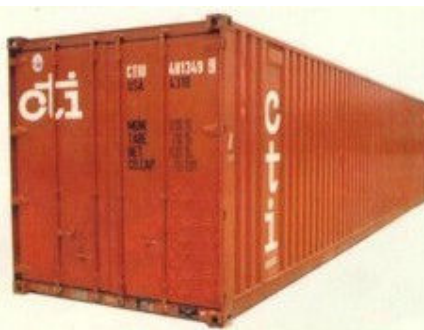


	<i>20' Dry Cargo Container</i>		<i>40' Dry Cargo Container</i>	
SPECIFICATIONS	8'6" STANDARD		8'6" STANDARD	
Inside Cubic Capacity	32.8cu.m (1,158 cu.ft)		67.2cu.m (2,372 cu.ft)	
Cargo Capacity	21,640 kg (47,716 lbs.)		26,500 kg (58,433 lbs.)	
Tare weight	2,360 kg (5,204 lbs.)		3,980 kg (8,776 lbs.)	
	OUTSIDE:	INSIDE:	OUTSIDE:	INSIDE:
Length	6.05m (19.84 ft)	5.90m (19.35 ft)	12.19m (40.00 ft)	12.01m (39.39 ft)
Width	2.44m (8.00 ft)	2.35m (7.71 ft)	2.44m (8.00 ft)	2.35m (7.71 ft)
Height	2.59m (8.50 ft)	2.38m (7.80 ft)	2.59m (8.50 ft)	2.38m (7.80 ft)
DOOR SIZE:				
Height	2.28m (7.48 ft)		2.28m(7.48 ft)	
Width	2.33m (7.64 ft)		2.33m(7.64 ft)	

	<i>40' Dry Cargo Hi-Cube Container</i>	
SPECIFICATIONS	9'6" HI-CUBE	
Inside Cubic Capacity	75.9cu.m (2,679 cu.ft)	
Cargo Capacity	26,330 kg (58,058 lbs.)	
Tare weight	4,150 kg (9,150 lbs.)	
	OUTSIDE:	INSIDE:
Length	12.19m (40 ft)	12.01m (39.39 ft)
Width	2.44m (8.00 ft)	2.35m (7.71 ft)
Height	2.90m (9.50 ft)	2.69m (8.82 ft)
DOOR SIZE:		
Height	2.58m (8.46 ft)	
Width	2.35m (7.71 ft)	



<i>20' Reefer Containers (FINSAM)</i>		
	<i>MODEL 2107</i>	<i>MODEL 2061/2084</i>
SPECIFICATIONS:		
WEIGHTS:		
Max. Gross Weight	24,000 kg	22,860 kg
Net Tare Weight	3,230 kg	3,800 kg
Payload	20,770 kg	19,060 kg
DIMENSIONS:	INSIDE:	INSIDE:
Length	5,485 mm	5,170 mm
Width	2,250 mm	2,235 mm
Height	2,260 mm	2,250 mm
DOOR OPENING:		
Width	2,230 mm	2,235 mm
Height	2,220 mm	2,215 mm
VOLUMES:		
Capacity	27.9m ³ (985 cu.ft)	26.0m ³ (918 cu.ft)

	<i>20' FLATRACK</i>		<i>40' FLATRACK</i>	
SPECIFICATIONS				
Cargo Capacity	approx 20,015 kg (44,133 lbs.)		approx 30,476 kg (67,200 lbs.)	
Tare weight	up to 3,100 kg (6,835 lbs.)		approx 5,646 kg (12,450 lbs.)	
	OUTSIDE:	INSIDE:	OUTSIDE:	INSIDE:
Length	6.06m (19.88 ft)	5.85m (19.19 ft)	12.19m (40.00 ft)	12.05m (39.52 ft)
Width	2.44m (8.00 ft)	2.23m (7.31 ft)	2.44m (8.00 ft)	2.12m (6.95 ft)
Height	2.44m (8.00 ft)	2.15m (7.04 ft)	2.44m (8.00 ft)	1.96m (6.43 ft)
	or 2.59m (8.50 ft)		or 2.59m (8.50 ft)	



	20' OPEN TOP CONTAINER		40' OPEN TOP CONTAINER	
SPECIFICATIONS	8'6" STANDARD		8'6" STANDARD	
Inside Cubic Capacity	32.6cu.m (1,151 cu.ft)		66.7cu.m (2,355 cu.ft)	
Cargo Capacity	21,700 kg (47,839 lbs.)		26,530 kg (58,490 lbs.)	
Tare weight	2,300 kg (5,071 lbs.)		3,950 kg (8,710 lbs.)	
	OUTSIDE:	INSIDE:	OUTSIDE:	INSIDE:
Length	6.06m (19.88 ft)	5.88m (19.29 ft)	12.19m (40.00 ft)	12.01m (39.39 ft)
Width	2.44m (8.00 ft)	2.33m (7.64 ft)	2.44m (8.00 ft)	2.33m (7.64 ft)
Height	2.59m (8.50 ft)	2.31m (7.58 ft)	2.59m (8.50 ft)	2.31m (7.58 ft)
DOOR SIZE:				
Height	2.28m (7.48 ft)		2.28m (7.48 ft)	
Width	2.33m (7.64 ft)		2.33m (7.64 ft)	

